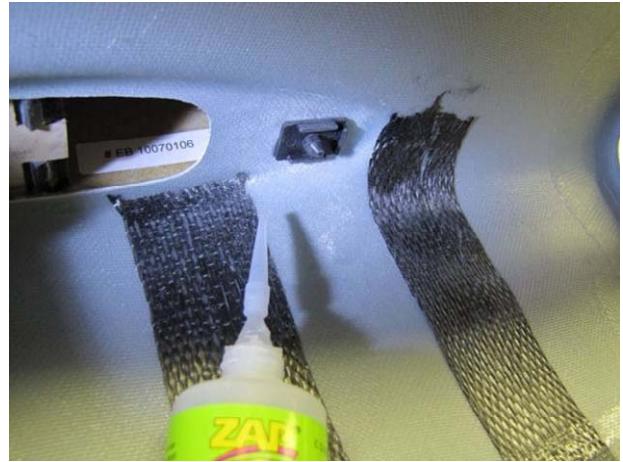


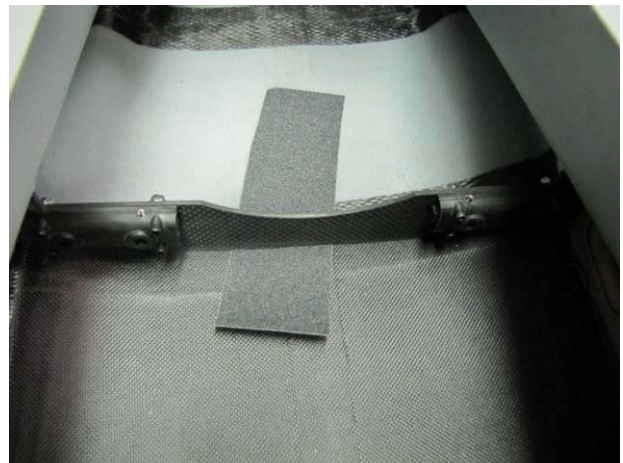
BANDIT *arf* Mk II

Assembly & Operation Manual

- Apply Vaseline to the C.F. pin then Zap glue the CF pin receptacle to the fuselage internal skin.

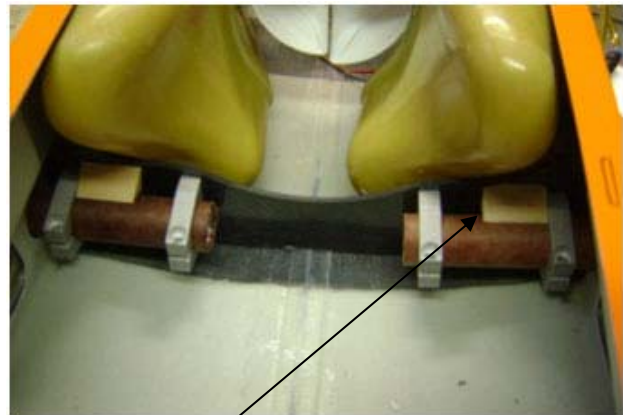


- Suspend the fuselage on foam strips fore and aft of the wing. Use a strip of #80 grit sandpaper to be sure formers F-5 and F-6 have a relaxed fit.



- Position F-5 and F-6 into the fuse. The phenolic tube extends 3/32" outside of the fuselage wing fairing. See the photo on the next page. Trial fit the wings to the fuselage. It may be necessary to adjust the wing tube and blade spar openings with Perma-Grit tools for a proper fit of the wing to the fuselage fairing. These should all be loose fitting clearance openings.

Note: The CF former must be positioned on the front of the assembly, the 10-32 clamp bolts must be to the aft.



- Cut (2) 1-1/8" long 1/2" x 1/2" triangle balsa blocks and CA glue them as shown. This holds the phenolic tubes in place while the wings are slid on and off.

BANDIT arf Mk II

Assembly & Operation Manual

- ❑ Taper one end of the 1/8" balsa strips and insert them between the outboard ends of F-6 and the fuselage to hold the wing T.E. even with the wing root fairing. Flaps can be taped to the fuselage to help hold the wing.
- ❑ View the model from the front to be sure that the wings are properly set. The dihedral is set by F-5 and F-6.



- ❑ F-5 and F-6 are glued to the fuselage with AeroPoxy in two stages. Apply it where access allows, being careful to not glue the wing or spars to the fuselage and allow to cure.

NOTE: BVM has supplied a strip of emery cloth to keep the aluminum tube polished smooth. Use a shoe shine action. Apply Vaseline to the wing tubes and carbon fiber spars.



- ❑ Remove the wing and then apply AeroPoxy where appropriate in a second gluing step. Apply glue to the phenolic tube as it exits the fuselage fairing and to the forward pin receptacle. Finger wipe away all excess glue, then use Isopropyl alcohol to keep the paint clear of glue prints.

