

Kingcat Addendum

Alternate Canopy Retention

developed by: Dan Avilla

This system negates the need for the ¼-20 nylon bolt and hex driver that is standard in the kit. It may be a bit more work to install but offers two fewer parts to keep track of.

Hatch Latch Instructions

Use BVM5510 Hatch Latch instead of bolt to hold on canopy frame.



Before you install the 5 canopy hooks you need to make one or buy from BVM. When making the one used in the back. Have the flange 1/8" taller. This will be easier to glue later.



This is a great 1mm felt pen that they sell at craft stores for layout. It erases with lacquer thinner.



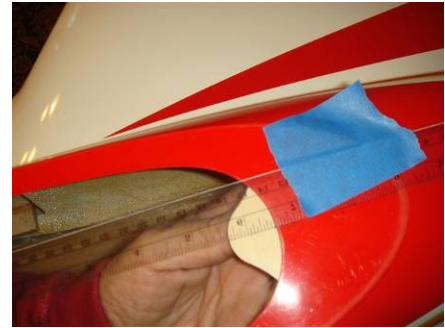
Draw a center line on rear of fuselage.



Put centerline on capture plate and fill both holes with Aeropoxy.



Hold capture plate center and mark area to be cut off.



Cut plate ready for gluing.



Glue plate under flange.



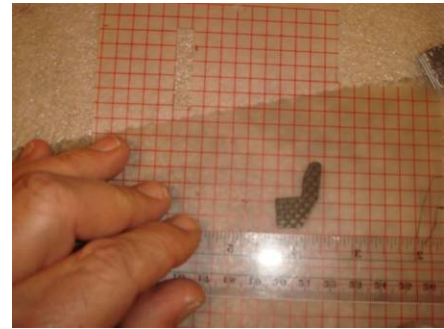
Ink slot to be cut out.



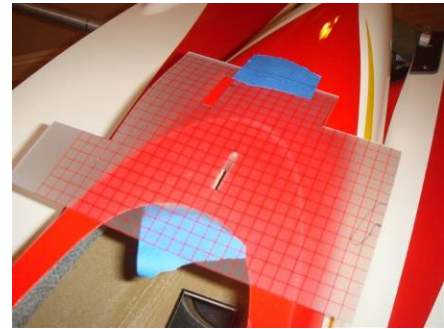
Cut slot using measurements.



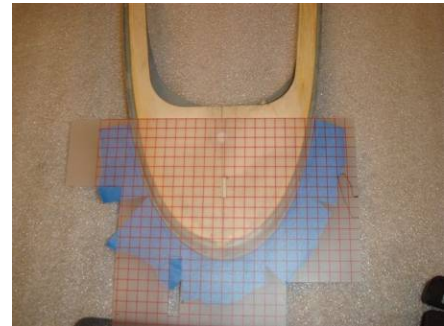
Take pattern material found in quilt shops and cut slot only for hook flange.



Lightly tape pattern to fuselage making sure slot is forward and hook will slip in from bottom. Put canopy frame on fuselage. Tape template real good to canopy frame. Remove frame.



Transfer slot location to frame and cut.



Example of what it looks like inside.



Test fit hook.



Before gluing make sure you have enough angle on rear hook. Just tack in place and see if you can get canopy frame to come off. You might have to break it loose and increase the length of the slot. Finish gluing with Aeropoxy when you are satisfied with fit.



This picture shows the best flat location for the BVM5510 Hatch Latch. Note before installing latch take sharp point off pin and file a finger nail slit for ease operation.



Grind flange so BVM5510 Hatch Latch fits tight into top of fuselage flange.



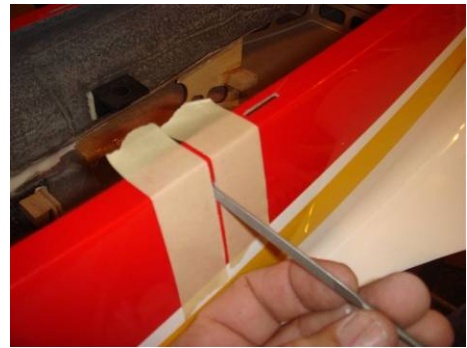
Use pen drill to give accurate location on outside.



Ink slot to be cut. Use tape as guide and a small diamond cutter to rough out slot.



Take your time and use a needle file to make a clean slot. Drill hole for pin. Once pleased with operation, glue with thick CA.



Note if you have a gap between canopy frame and fuselage you will need to make a plywood spacer so pin will lock better. Notice scrap balsa used to hold latch open making it easier to mark hole.



Make up a piece of plywood and poly ply that will be laminated together. If you do not have gap just use poly ply.



Mark the plywood top. We want poly ply on bottom.



Laminate the poly ply to the bottom on the plywood. Drill hole for pin. The pin will slide on the poly ply.



Glue laminated piece to canopy frame with pin inserted.



Shim glued in.



Aeropoxy latch. Your done.

